

# WEBSTATION

Feels good does more



PRODUCTION | ON AIR CONSOLE

---

Six dual inputs  
Built in auto Silence detector  
Three USB stereo in/out channels  
USB control section included  
Two band EQ  
Drop Through design

Ideal for Production, Voice tracking and On-AIR  
CRM and Phone outputs  
Bidirectional Cue communication buss  
Built in VOIP functionality  
Cleanfeed output for external Hybrids  
Internal NON STOP switching

---



# WEBSTATION

*It's made for you...*

Own a state-of-the-art broadcast mixer at an attractive price with the Webstation. This meticulously hand-crafted piece is designed with low-noise circuitry for exceptional audio quality.

The Webstation is an intelligent audio solution featuring an internal USB control section and a built-in silence detector, ensuring seamless operations for any self-operating production DJ.

## Why Choose the Webstation?

**Advanced VOIP Functionality:** Integrated telephone VOIP for easy communication.

**Versatile Connectivity:** Includes 3 in/out stereo USB channels and 2 ultra-low-noise mic inputs.

**Ideal for Multiple Uses:** Perfect for on-air broadcasting, production work, podcasting, and streaming.

**Easily manage up to 3 stereo channels from your play-out software.**

**Robust Construction:** Heavy-duty RF shielded chassis with a sleek, modern design.

**Features a strong, powder-coated front panel, backed by over 52 years of D&R's expertise.**

The Webstation is your personal radio control center, crafted to meet today's broadcasting needs. Transform your studio with the Webstation and experience the future of audio mixing today.

## VERSATILE AUDIO INPUTS AND ADVANCED CONNECTIVITY

The WEBSTATION mixer offers 2 balanced, phantom-powered mic inputs with inserts for external voice processors, 6 stereo line inputs, 3 USB channels, and 1 telephone VOIP channel.

For analog phone line connections, a Clean-feed output is available for external hybrids. A single USB connection transfers 3 stereo audio channels, VOIP signal, control data, and software meter information between the mixer and your PC.

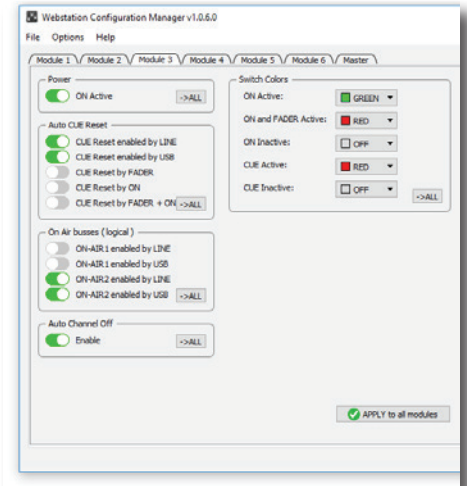
With the ability to use Talkback by pressing both Mic CUE and VOIP CUE buttons, communicating with callers before broadcasting is simple.

The Webstation also features a musical 2-band equalizer and low-cut filter on mic inputs for crystal clear voice transmission.

**Customizable Smart Module Programming**  
The WEBSTATION's modules are easily programmable to suit your needs via software, allowing you to activate specific mixing desk functions.

Adjust and personalize your settings to streamline your workflow and enhance your audio production.

The WEBSTATION: Compact, Powerful, and Perfect for Professional Broadcasting.



Each of the WEBSTATION's 6 modules has a dedicated page for programming Cue reset via Mic, Line, USB, Fader, On, and Fader + On. Customize the MIC-ON bus for your ON-AIR light with inputs from Mic, Line, or USB. Enjoy programmable switch colors and activate the CRM mute module as needed. Individual Phantom power can also be toggled on or off for each channel effortlessly.

WEBSTATION: Tailor Your Broadcast Experience with Precision and Ease.



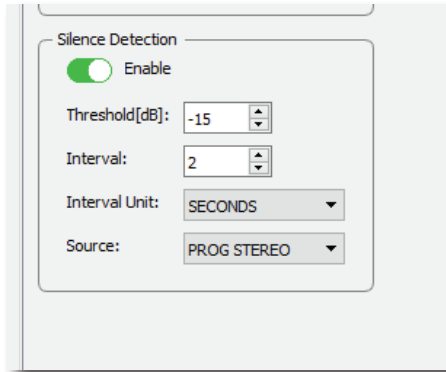
# WEBSTATION

*Control you've always wanted...*

## RADIO OPTIMIZED MASTER SECTION

The WEBSTATION's master section is tailored for radio use, featuring essential controls like the Control Room Monitor (CRM) and a high-output headphone jack capable of driving impedances as low as 8 Ohms. Auto Cue synchronizes Phone and CRM outputs with Cue selections, and the CUE reset feature clears all active Cue selections.

When the DJ mic is active, the Control Room Monitors are automatically muted to prevent feedback. The NON STOP Switch ensures your station remains "ON-AIR" by routing the first stereo USB signal to the main outputs, even when you're setting up new programs or away from the studio.



## BUILT-IN SILENCE DETECTION

The WEBSTATION features customizable Silence Detection with settings for threshold, interval time, and source.

Software pages allow you to program switch colors and configure each module to your preferences.

Feedback prevention settings ensure you can work in the same room as your speakers without issues.

Options for CRM mute or CRM autocue help avoid feedback when using the mic.

All settings are safely stored with read and write modes, so you never lose your configurations.

WEBSTATION: Intelligent Features for Smooth, Error-Free Broadcasting.

## SMART MASTER PROGRAMMING

The master section offers extensive options to fine-tune your mixer. Explore the software pages to customize the Webstation to your specific needs.



# WEBSTATION

*We help you to get there...*

## MIC LINE CHANNEL



The Webstation features an internal Voice Tracking bus, seamlessly integrating with play-out systems like our AIRCAST software and others.

It includes a very low noise mic input with a low cut filter and a 2-band equalizer, connected to a smooth-running fader for precise control. This eliminates the issue of noisy faders. The fader start sensing is managed electronically through the fader's control voltage.

You can use the Webstation for production while ON-AIR by switching to NON-STOP mode. The CUE switch also doubles as a communication system for easy interaction with callers. Both the ON switch and the fader support "fader-start" capabilities.

Personalize your settings for modules and master control, all storable via software. The Webstation is perfect for ON-AIR broadcasting, internet radio production, studio work, or home podcasting.

## USB CONNECTIVITY AND PLAY-OUT INTEGRATION



Each Webstation USB channel accepts stereo sources from play-out systems like our AIRCAST, with gain control for precise level adjustments.

Use the CUE switch for pre-listening, and activate tracks via the ON switch or "faderstart" functionality. The fader operates a high-quality stereo VCA. For vintage stations with CD players, the USB input can switch to accept stereo line signals.

The CUE also serves as a communication bus, allowing VoIP callers on the channel to hear music and DJs during activation without broadcasting.

### USB Routing

The Webstation features three USB stereo inputs and outputs. Internally, inputs route to channels 3 to 5, where channel three's USB input also links to the Non-Stop switch when activated, ensuring uninterrupted operation. USB outputs, treated as inputs on your PC, connect to Program output and Voice Track bus.

## VOIP CHANNEL



Channel 6 of the Webstation mixer is dedicated to Voice Over Internet Protocol (VoIP), allowing integration with services like Skype or other VoIP providers. Ensure your provider supports VoIP for telephone connections.

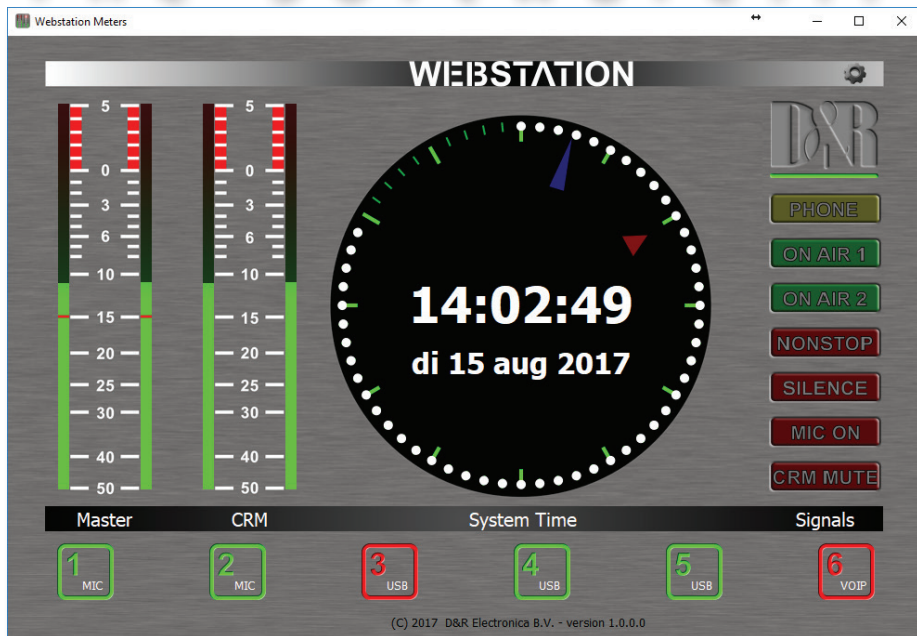
Adjust send and return levels with separate Gain and VoIP send controls. Incoming calls can be answered with the Conn button, pre-viewed via the CUE switch, and seamlessly integrated into your radio show using the ON switch or fader.

For use with an external Hybrid, an additional cleanfeed output is conveniently located on the console's rear. This output feeds an external Hybrid and returns the signal to the VOIP channel when the input selector is set to Line. The DJ Mic can communicate with callers outside the broadcast by activating the CUE switch in both Mic and VoIP input modules, facilitating live radio production.



Back panel view

# The Software...



## USB CONTROL SECTION

On the right side of the Webstation mixer, 12 illuminated switches (green/red) are available. These switches integrate seamlessly with your Radio Automation software, enabling functions such as starting jingles or recording voice tracks while on-air.

The included USB control software enhances radio operations with customizable programming options, adding excitement to your broadcasts.

Each switch can be assigned to control specific functions in your play-out software, putting you in complete command. Master controls for Phones and CRM are conveniently located in the master section. When Auto Cue is activated for CRM, any selected CUE can be monitored. The CRM automatically mutes upon activation of the DJ mic to prevent feedback, provided CRM Auto Cue is enabled. The NON-STOP switch instantly directs the first USB stereo signal (channel 3) to

the master outputs, allowing seamless transitions for (pre)production tasks.

## POWER SUPPLY AND MORE

The Webstation is equipped with an internal, low-noise heavy-duty switched-mode power supply. It accepts AC voltages ranging from 85V to 264V and features a standard Euroconnector with fuse located on the rear of the frame.

## POWER SUPPLY AND MORE



## SOFTWARE

The Webstation utilizes USB for control signals via the HID protocol. This enables the display of master output signals on a TFT screen (not included) connected to your PC (not included) using a sleek meter application. Program and CRM stereo signals are presented on a high-resolution P.P.M.

Additionally, console functions such as NON-STOP mode, Silence Detection, Mic-On, CRM mute, channel status, and input selection are clearly indicated on the TFT screen. Simultaneously, the software application includes a professional Radio clock synchronized with your local PC and an NTP time server.

## SUMMARY

The Webstation is the ideal tool for creating radio programs with its intuitive and uncluttered features.

Compact and reliable, it's perfect for production rooms and serves as the central hub for your (Internet) radio station.

## INPUTS

Mic inp : bal, 2 kOhm, XLR, 48 volt Phantom  
 Noise : - 128 dB (A-weighted)  
 Sensitivity : - 70dB min, OdB Max.  
 Insert : Jack unbal. send 600 Ohm -10dBv  
 Line inputs: unbalanced 10kOhm, Cinch  
 Gain : range of 40dB  
 USB : 3x Stereo in and 3x stereo out

## USB

Fully compliant with USB 2.0 playback and record mode. 3x Stereo in and 3x stereo out

## USB CONTROL SECTION

12 free assignable illuminated switches based on the HID protocol

## VOIP CHANNEL

Connected via the central USB connector.

## OUTPUTS

Left/Right : + 0dBu unbal. on Cinch  
 CRM : + 0dBu unbal. on Cinch  
 Headphone : 16-200 Ohm, Jack  
 USB out : Program/Voice track/  
 VoIP

## EQUALIZER

High : + / -12 dB, 12kHz shelving  
 Low : + / -12dB, 60 Hz shelving

## OVERALL

Frequency response : 10 - 60.000Hz  
 Distortion : < 0.01% max at 1 kHz  
 Mic On : Opto/FET's. (60V/500mA)  
 Metering : Software application incl.

## CONTROL SOFTWARE

A software program is included in the delivery for programming the Control section (Webstation Virtual Keyboard Mapper) and internal mixer settings

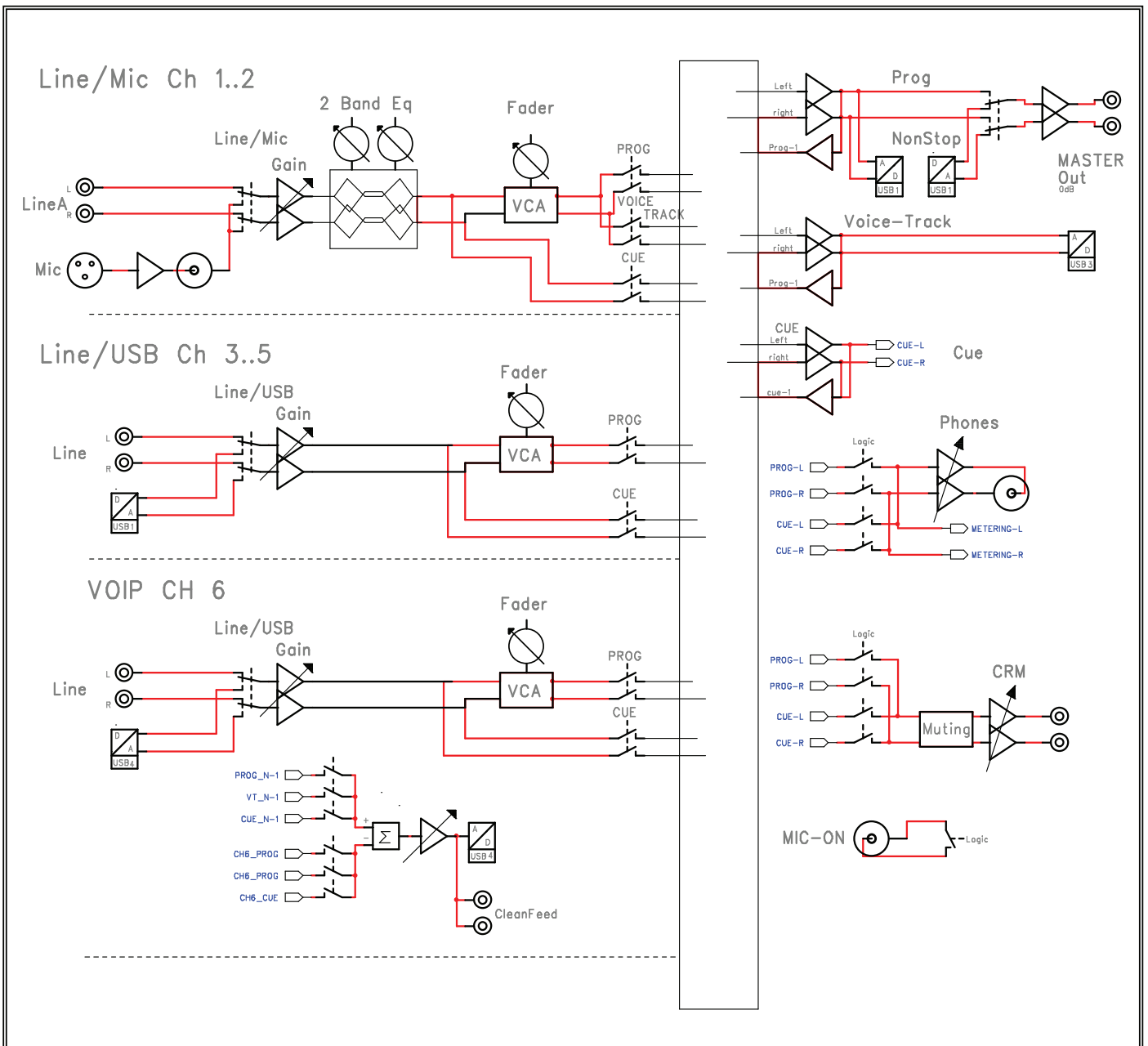
## DIMENSIONS

Left-Right : 350 mm (front panel)  
 Front panel thickness: 2mm  
 Radius Corners : 20mm  
 Front-Back : 315 mm (front panel)  
 Height : 30mm to 90mm  
 Weight : 8kg.  
 Drop through hole : 320mm x 295mm



feels good does more

# Signal Flow



feels good does more